



**WE
WANT
YOU!**

We need everyone who is a member to try and bring someone who has not been here before.

Would your colleague or peer benefit from the networking we offer? Could they help us in becoming better informed leaders? Please submit contact information for prospective members to our chapter secretary Andy Dobelstein.

adobelstein@thedatavault.com

2013-2014 Board Members



Office	Name/E-mail	Work #/Alternate #
President	Eva Bush eva.bush@e-farmcredit.com	502-562-7256 812-734-1931
Vice-President	Tammie Mills tammie.mills@yum.com	502-874-6272 502-930-5392
Treasurer	Yvonne Wathen yvonne.Wathen@yum.com	502-874-8498
Secretary	Andy Dobelstein adobelstein@thedatavault.com	502-244-1151 502-553-5141
At Large	Stacie Older Stacie.older@e-farmcredit.com	502-420-3754
Past President	Mary Arnold marnold@wyattfirm.com	502-562-7256 812-734-1931



October 15, 2013

Louisville Chapter



Changes to Chapter Meetings

\$15 for Non-ARMA Member

\$10 for ARMA member (any level of membership)

First-time guests attend free!

\$20 ARMA member + guest

Door Prize Sponsors

If your business is interested in sponsoring our door prize, you can provide advertisement/pamphlets for the meeting. Please see a Board Member for details.



People ask the difference between a leader and a boss. The leader leads, and the boss drives.

Theodore Roosevelt

Upcoming Chapter Meetings

Date	Location	Topic
November 19, 2013 3:30-5:00	Farm Credit 1650 Lyndon Farm Ct 2 nd Floor, Neurstar Bldg	Board Member ARMA Las Vegas Re-Cap
December 17, 2013 3:30-5:00	Papa John's 2002 Papa Johns Blvd	Holiday Hors D'oeuvres Meet and Greet
January 21, 2014 3:30-5:00	Farm Credit 1650 Lyndon Farm Ct 2 nd Floor, Neurstar Bldg	TRIM

We're on the web!

<http://louisville.arma.org>



Today's Program

Take some time to review Lean Six Sigma tools and methods in a RIM environment. We'll show you how to look at your processes, tackle how to address priorities, and use data to drive direction. Following DMAIC principles, we'll cover topics like value stream mapping, process capability, and more. So join us for this practical, no-nonsense introduction that will help you make more informed decisions.

6σ



Today's Speaker

Eva Bush is a Director of Accounting Operations at Farm Credit Mid-America (FCMA). FCMA is a \$19 billion agricultural lending cooperative serving more than 95,000 farmers, agribusinesses and rural residents throughout Indiana, Ohio, Kentucky and Tennessee. Eva has been in the Financial Services Industry for twenty-three years and with FCMA for nineteen. She and her team are responsible for the centralized indexing for 97 branch offices. She specializes in OnBase, SharePoint Templates, records management and centralized accounting functions. Eva is currently Board President of the Louisville Chapter of ARMA International. She is a graduate of Indiana University and the Dale Carnegie Course in Effective Communications and Human Relations, and has a Six Sigma White Belt Certification.

Notes

Resources

Certified Records Manager

Missy O'Brien is offering her help, tutoring, coaching, support, or just a sympathetic ear to anyone interested or currently testing for obtaining the CRM. Contact: Missy O'Brien, CRM 502-574-5075

Consulting

Lisa Baize
Clark-Baize Consulting, LLC
P.O. Box 4816
Louisville, KY 40204
502-592-1371, www.clark-baize.com

ARMA

www.armafoundation.org

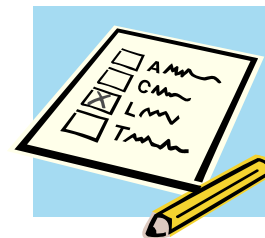
Free Information Tool

Thanks to Lisa B.Tayman for use of this tool.

<http://www.informationconsulting.biz/information-news>

LB_Tayman@InformationConsulting.biz

317-908-0377



RIM Self-Assessment

Achieve your professional goals. Take the ARMA International RIM Competencies Self-Assessment to find out where you are and where you need to be.

<http://www.arma.org/competencies/index.cfm>



All about ARMA

ARMA International is a not-for-profit professional association and the authority on managing records and information— paper and electronic. The association was established in 1955. Its approximately 10,000 members include records managers, archivists, corporate librarians, imaging specialists, legal professionals, IT managers, consultants, and educators, all of whom work in a wide variety of industries, including government, legal, healthcare, financial services, and petroleum in the United States, Canada, and 30-plus other countries.

www.arma.org/

headquarters@armaintl.org

800-422-2762



Educational Opportunities >>>

San Jose State

Master of Archives and Records Administration (MARA) at San Jose State University. For information go to <http://slisweb.sjsu.edu/mara/> or email Dr. Patricia Franks, MARA Program Coordinator, at pfranks@slis.sjsu.edu

Bay Path

MS in Communications and Information Management at Bay Path College. This program is designed to be completed by taking either 1 or 2 courses each eight-week session. For more information, call 413-565-1332 or visit <http://www.baypath.edu> Diane Ranaldi, M.Ed., Dean, Admissions, Bay Path College